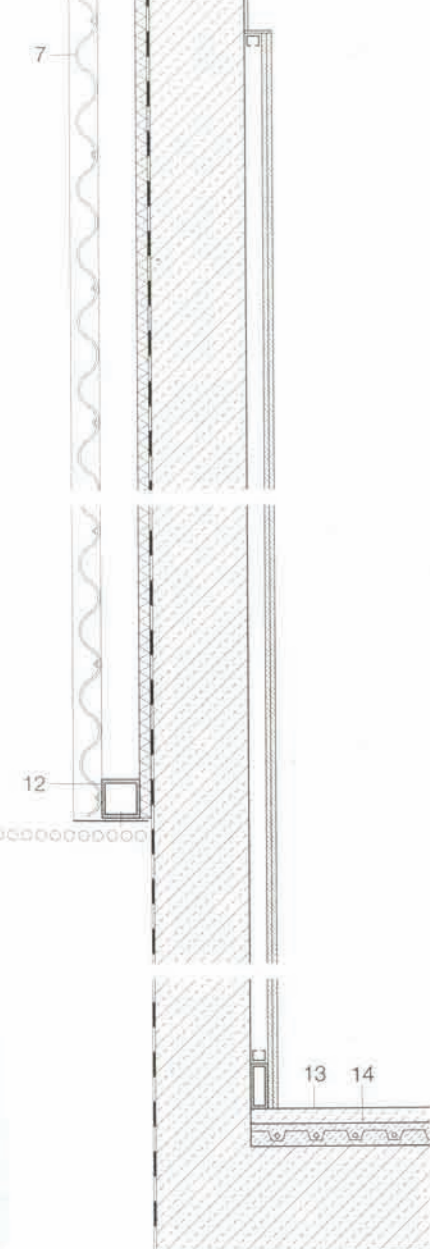
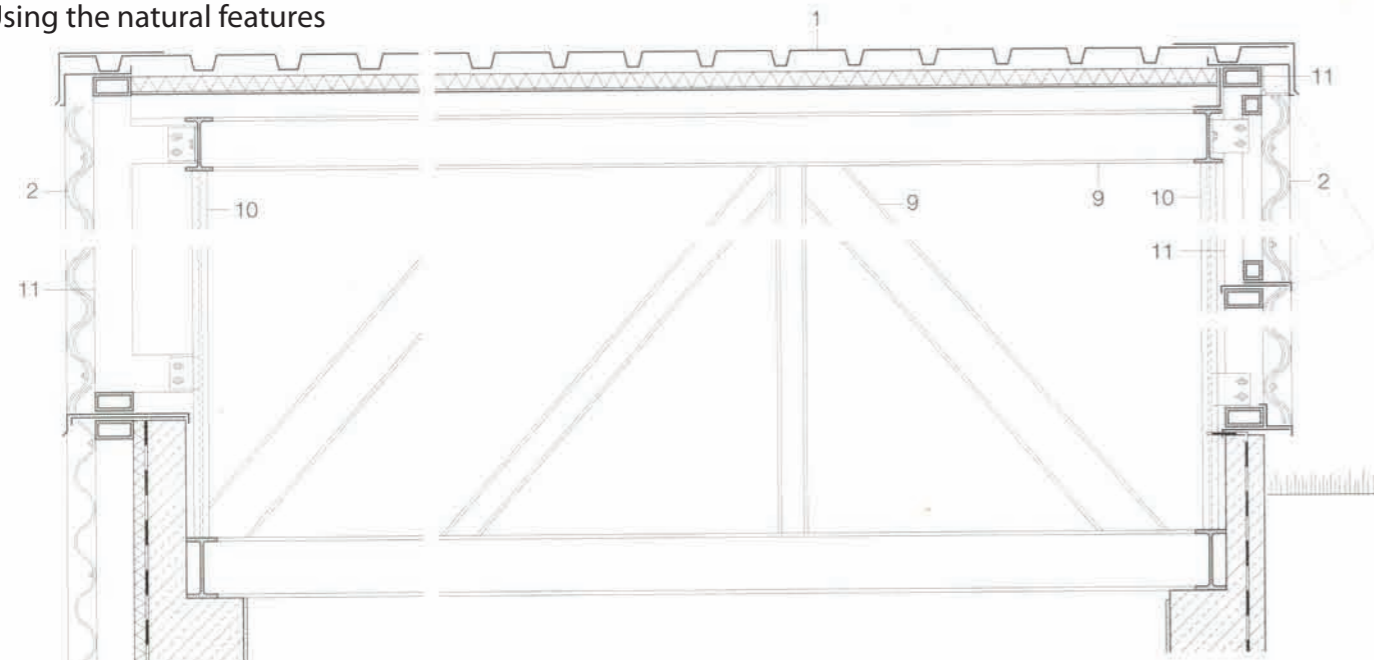


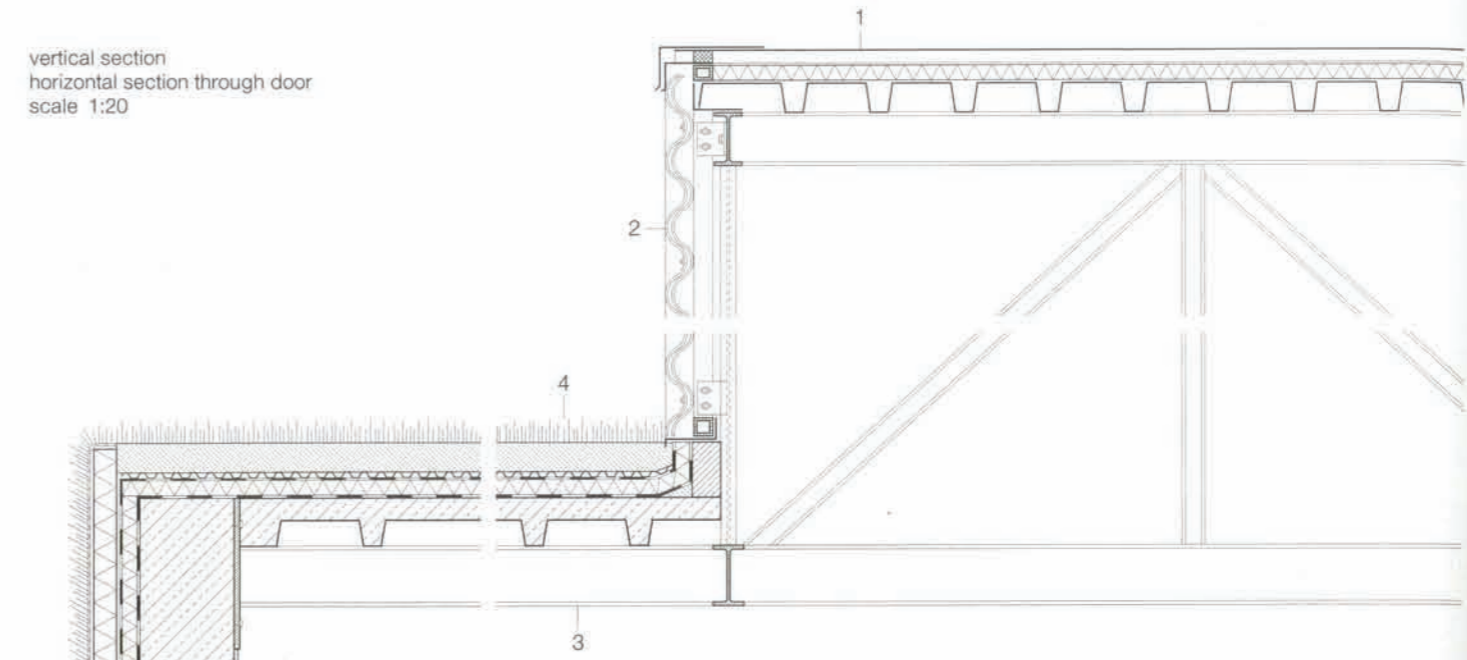
STUDIO IN MADRID

ARCHITECTS: ABALOS & HERREROS, MADRID

Using the natural features



vertical section
horizontal section through door
scale 1:20



- 1 ribbed metal sheeting
40 mm extruded polystyrene-foam thermal insulation
between 60 x 40 mm steel angles
- 2 two-layer corrugated polycarbonate sheeting with UV-screen coating, screw fixed
- 3 160 mm steel I-beam
- 4 inverted roof construction:
80 mm substrate layer
filter mat
drainage and filter layer
40 mm extruded polystyrene-foam thermal insulation
1.2 mm sealing layer
- 5 planted layer
reinforcing mat
50 mm polythene rigid-foam insulation, filter mat
40 mm extruded polystyrene-foam thermal insulation
1.2 mm sealing layer
250 mm reinf. conc. wall
2x 13 mm plasterboard
- 6 100 x 50 mm steel RHS
- 7 wall construction:
corrugated polycarbonate sheeting with UV-screen coating, screw fixed
- 8 door opening:
steel frame/two-layer polycarbonate sheeting with UV-screen coating
- 9 160 mm steel I-section
- 10 80 mm steel I-section
- 11 100 x 50 mm steel RHS
- 12 100 x 100 mm steel SHS
- 13 40 mm terrazzo flooring
- 14 screed for underfloor heating

